

REV 002 001	DATE 01 Jun 2018 22 May 2018	ECN NUMBER	ECR COMMENT FIRST ISSUE	3	4	5	6	7
-------------------	------------------------------------	------------	----------------------------	---	---	---	---	---



PICTURE FOR ILLUSTRATION ONLY

LID RETAINING SCREW FOR HEAVY DUTY ENCLOSURES

M6X25 STANDARD CAPTIVE SCREW / STAINLESS STEEL

- SUPPLIED IN PACK OF 4
- CLEAN AND BURR FREE
- MATERIAL STAINLESS STEEL 304
- NATURAL FINISH

NOTE: FOR USE WITH SERIES TYPES 486, 487 AND 488

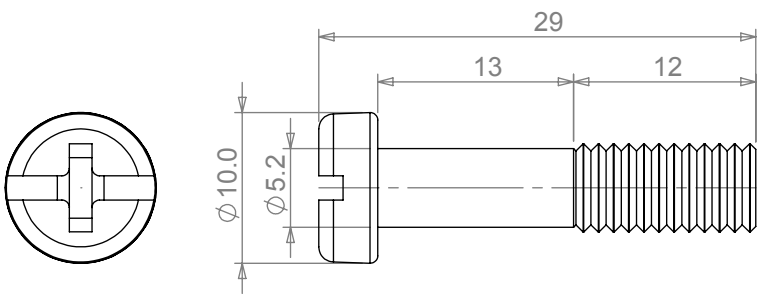
SIZE CODE	SCREW PART No
121208	486-SSCR-M6
121209	486-SSCR-M6
130806	486-SSCR-M6
161609	486-SSCR-M6
221208	486-SSCR-M6
221209	486-SSCR-M6
261609	486-SSCR-M6
261612	486-SSCR-M6

SELECT **SIZE CODE** FROM TABLE BELOW

How to Work Out Deltron Enclosures Part Numbers

Heavy Duty

e.g. 487-261609E-68



Series - (3 digits)	Size Identifier - (6 digits)	Coating Colour - (1 digit)	IP Rating - (2 digits)
XXX	XXXXXX	X	XX
SERIES CODE	SIZE CODE	COATING CODE	IP CODE
486 = No Coating 487 = Powder Coating 488 = Nylon Coating	121208 = 125 x 125 x 80mm 121209 = 125 x 125 x 90mm 130806 = 130 x 80 x 60mm 161609 = 160 x 160 x 90mm 221208 = 220 x 120 x 80mm 221209 = 220 x 120 x 90mm 261609 = 261 x 160 x 90mm 261612 = 260 x 160 x 120mm	Blank = No Paint (486) E = Blk B = Blu A = Gry	Blank = No IP Rating 66 = IP66 68 = IP68