

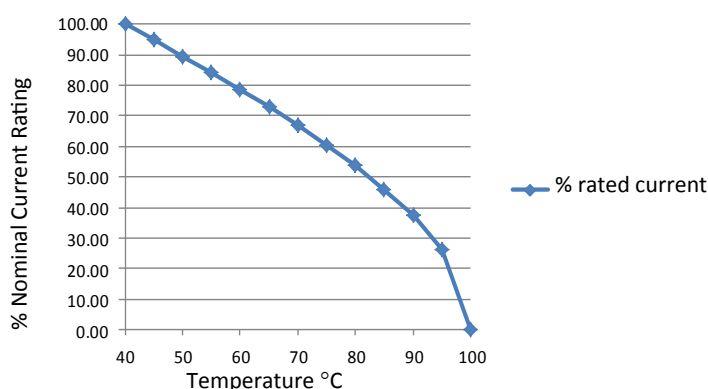
RES60-M Multi-Stage Filter

Medical Applications

Roxburgh EMC's RES60-M range are two-phase filters, designed specifically for the medical industry. They offer a high differential mode performance, with an operating frequency from DC to 400Hz. The series includes eight variations to select from with rated current between 1amp and 30amp.



Temperature Derating Curve for EMC Filters Rated at 40°C Ambient and 100°C Maximum



Call us on:
Tel: +44 (0) 1724 273228

Features:

- Two-Phase Filter
- High Differential Mode Performance
- UL Approved E191581
- For use from DC to 400Hz

Benefits:

- Compact size for rated current
- Fast-on, screw or wire terminations
- Quick and Easy Mounting

Applications:

These filters are designed for applications within the **medical industry**.

Full technical specification on page 2

Other options in this range on page 3

DEM Manufacturing
 Deltron Emcon House
 Hargreaves Way
 Sawcliffe Industrial Park
 Scunthorpe, North Lincolnshire.
 DN15 8RF



Tel: 44 (0) 1724 273200
 Fax: 44 (0) 1724 280353
 Email: sales@dem-uk.com
 Web: www.dem-uk.com/roxburgh

RES60F16

Rev. 0

CHARACTERISTICS:

Rated Voltage:	250VAC max
Rated Current at Ambient:	16A @ 40°C
Operating Frequency:	DC-400HZ
Climatic Class (IEC60068-1):	25/100/21
Temperature Range:	-25°C to +100°C
Over load Current:	1.5 x Rated Ct. for 1 Min
Operational Leakage current : (at 230VAC/50Hz and Total C +/-20%)	0.002 mA max
Worst case Leakage current : (N interrupted and Total C +/-20%)	<1.18 mA max
DCR @ 25°C (+/-25%) :	25 mΩ
Test Voltage (100%) for 2 sec:-	L-N: 1100VDC
	L-GND: 3000VDC
Ingress Protection:	IP 20
Weight (Approximate):	200 gr

FILTER PARAMETERS:

Total Inductance (L-L'+N-N') @10KHz:	1.30mH +50%,-30%
Total Capacitance (L-L/L-N) @1KHz:	0.66µF +/- -20%
Total Capacitance (L/N-GND) @1KHz:	9.4nF +/- -20%
Total Resistance (L-L/L-N):	1MΩ +/- -10%
Total Resistance (L/N-GND):	

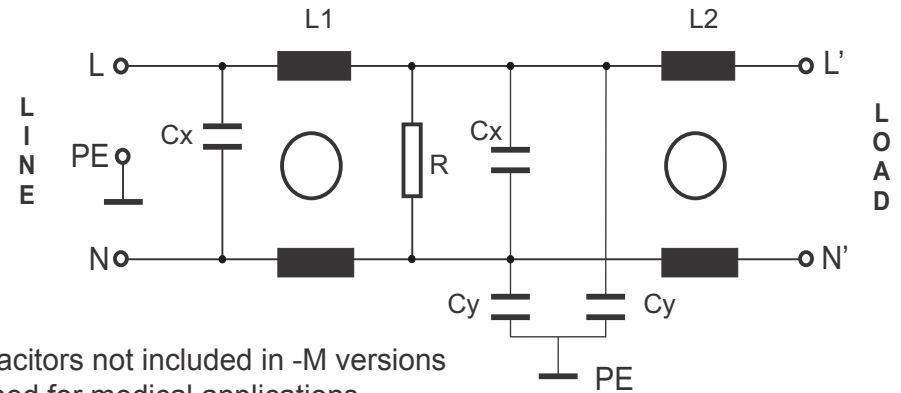
APPROVALS:

REACH
RoHS
UL



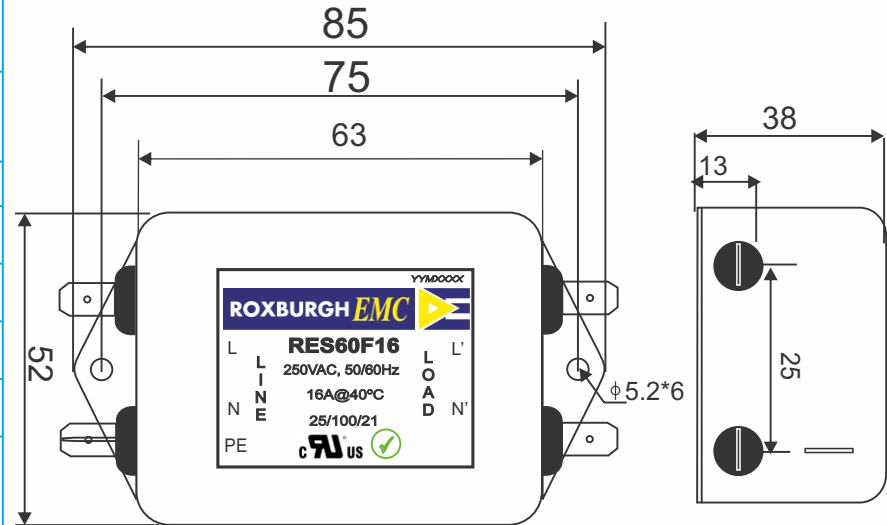
APPROVED BY
AJAY
DATE : 19-03-2014

CIRCUIT DIAGRAM:



Y-capacitors not included in -M versions designed for medical applications.

MECHANICAL DIMENSION (mm):



Note:

Housing matl. Fe with Ni Plated
Fast-On Terminal (6.3 x 0.8mm)
Connections

TOLERANCE: +/-1.0 mm






TEL: +44(0) 1724 273200
email: sales@dem-uk.com
web: www.dem-uk.com/roxburgh

RES60-M Multi-Stage Filter

Medical Applications

Options Available:

Part Number	Rated Current @40°C A	Leakage Current @ 230V/50Hz mA	Inductance ΣL mH	Capacitance ΣCx uF	Resistance ΣR K Ω	Connection Type		
								
RES60F01-M	1	0.002	12	0.22	1000	F	W	
RES60F03-M	3	0.002	2.5	0.22	1000	F	W	
RES60F06-M	6	0.002	0.97	0.22	1000	F	W	
RES60F10-M	10	0.002	0.8	0.47	470	F	W	
RES60F12-M	12	0.002	0.58	0.47	470	F	W	
RES60F16-M	16	0.002	0.65	0.33	1000	F	W	S
RES60F20-M	20	0.002	0.6	1	220	F		S
RES60S30-M	30	0.002	0.6	1	220			S

Call us on:

Tel: +44 (0) 1724 273228

DEM Manufacturing
 Deltron Emcon House
 Hargreaves Way
 Sawcliffe Industrial Park
 Scunthorpe, North Lincolnshire.
 DN15 8RF



Tel: 44 (0) 1724 273200

Fax: 44 (0) 1724 280353

Email: sales@dem-uk.com

Web: www.dem-uk.com/roxburgh