

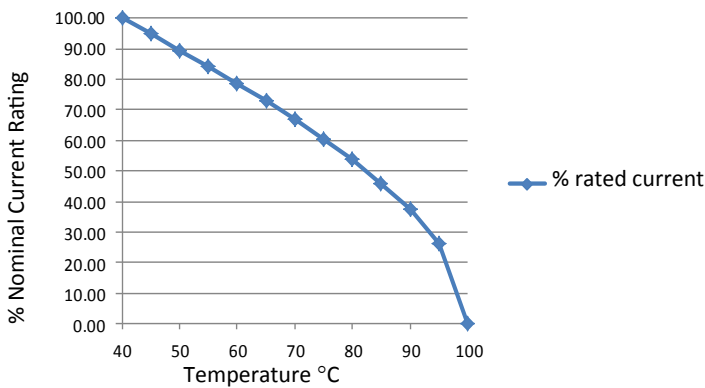
RES70-M Multi-Stage Performance Filter

Medical Applications

Roxburgh EMC's RES70-M range are two-phase filters, designed specifically for the medical industry. They offer a high differential and high common mode attenuation with high frequency. There are eight variations to select from with rated current between 1amp and 36amp.



Temperature Derating Curve for EMC Filters Rated at 40°C Ambient and 100°C Maximum



Call us on:

Tel: +44 (0) 1724 273228

Features:

- Two-Phase Filter
- High Differential Mode Performance
- UL Approved E191581
- For use from DC to 400Hz

Benefits:

- Compact size for rated current
- Fast-on, screw or wire terminations
- Quick and Easy Mounting

Applications:

These filters are designed for applications within the **medical industry**.

Full technical specification on page 2

Other options in this range on page 3

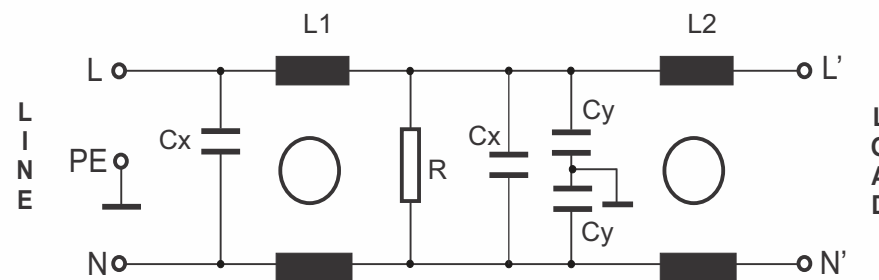
DEM Manufacturing
Deltron Emcon House
Hargreaves Way
Sawcliffe Industrial Park
Scunthorpe, North Lincolnshire.
DN15 8RF



Tel: 44 (0) 1724 273200
Fax: 44 (0) 1724 280353
Email: sales@dem-uk.com
Web: www.dem-uk.com/roxburgh

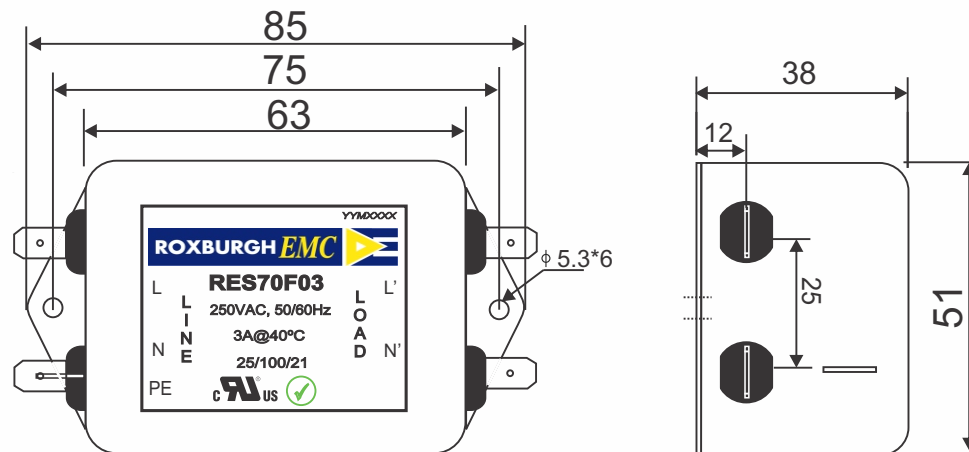
| | |
|---|--|
| RES70F03 | Rev. 0 |
| CHARACTERISTICS: | |
| Rated Voltage: | 250VAC max |
| Rated Current at Ambient: | 3A @ 40°C |
| Operating Frequency: | DC-400HZ |
| Climatic Class (IEC60068-1): | 25/100/21 |
| Temperature Range: | -25°C to +100°C |
| Over load Current: | 1.5 x Rated Ct. for 1 Min |
| Operational Leakage current : (at 230VAC/50Hz and Total C +/-20%) | 0.002 mA max |
| Worst case Leakage current : (N interrupted and Total C +/-20%) | <1.101 mA max |
| DCR @ 25°C (+/-25%) : | 325 mΩ |
| Test Voltage (100%) for 2 sec:- | L-N: 1100VDC L-GND: 3500VDC |
| Ingress Protection: | IP 20 |
| Weight (Approximate): | 250 gr |
| FILTER PARAMETERS: | |
| Total Inductance (L-L'+N-N') @10KHz: | 19.6mH +50%,-30% |
| Total Capacitance (L-L/L-N) @1KHz: | 0.94μF +/- -20% |
| Total Capacitance (L/N-GND) @1KHz: | 9.4nF +/- 20% |
| Total Resistance (L-L/L-N): | 0.47MΩ +/- -10% |
| Total Resistance (L/N-GND): | |
| APPROVALS: REACH RoHS UL | APPROVED BY AJAY Date: 28-03-2014 |

CIRCUIT DIAGRAM:



Y-capacitors not included in -M versions designed for medical applications.

MECHANICAL DIMENSION (mm):



Note:

Housing matl. Fe with Ni Plated
Fast-On Terminal (6.3 x 0.8mm)
Connections




TOLERANCE: +/-1.0 mm



RES70-M Multi-Stage Performance Filter

Medical Applications

Options Available:

| Part Number | Rated Current @40°C A | Leakage Current @ 230V/50Hz mA | Inductance ΣL mH | Capacitance ΣCx uF | Resistance ΣR K Ω | Connection Type | | |
|-------------|--------------------------|-----------------------------------|-----------------------------|-------------------------------|-------------------------------------|---|---|---|
| | | | | | |  |  |  |
| RES70F01-M | 1 | 0.002 | 22 | 0.33 | 1000 | F | W | |
| RES70F03-M | 3 | 0.002 | 9.8 | 0.47 | 470 | F | W | |
| RES70F06-M | 6 | 0.002 | 7.8 | 1 | 220 | F | W | |
| RES70F10-M | 10 | 0.002 | 4.5 | 1 | 220 | F | W | |
| RES70F12-M | 12 | 0.002 | 3.25 | 1 | 220 | F | W | |
| RES70F16-M | 16 | 0.002 | 2.8 | 1 | 220 | F | W | S |
| RES70S25-M | 25 | 0.002 | 2 | 2.2 | 220 | | | S |
| RES70S36-M | 36 | 0.002 | 1.23 | 2.2 | 220 | | | S |

Call us on:

Tel: +44 (0) 1724 273228

DEM Manufacturing
 Deltron Emcon House
 Hargreaves Way
 Sawcliffe Industrial Park
 Scunthorpe, North Lincolnshire.
 DN15 8RF



Tel: 44 (0) 1724 273200

Fax: 44 (0) 1724 280353

Email: sales@dem-uk.com

Web: www.dem-uk.com/roxburgh