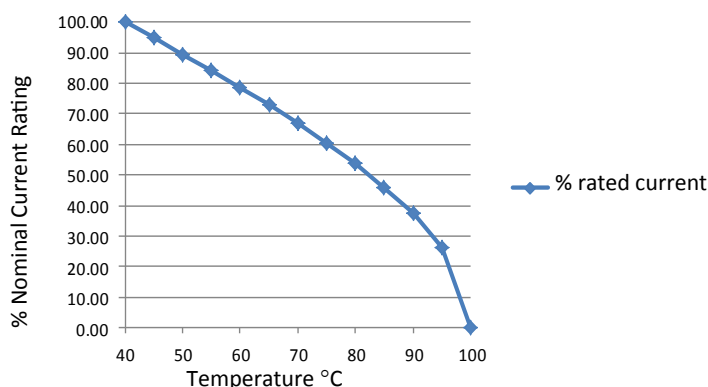


RES80-M Two-Stage High Performance Medical Applications

Roxburgh EMC's RES80-M range are two-stage filters, designed specifically for the medical industry. As a high performance filter it is well suited for particularly noisy applications. There are six variations to select from with rated current between 1amp and 16amp and operating frequency from DC to 400Hz.



Temperature Derating Curve for EMC Filters Rated at 40°C Ambient and 100°C Maximum



Call us on:
Tel: +44 (0) 1724 273228

Features:

- Two-Phase Filter
- High Performance Filter
- UL Approved E191581
- For use from DC to 400Hz

Benefits:

- Compact size for rated current
- Fast-on, screw or wire terminations
- Quick and Easy Mounting

Applications:

These filters are designed for applications within the **medical industry**.

Full technical specification on page 2

Other options in this range on page 3

DEM Manufacturing
Deltron Emcon House
Hargreaves Way
Sawcliffe Industrial Park
Scunthorpe, North Lincolnshire.
DN15 8RF




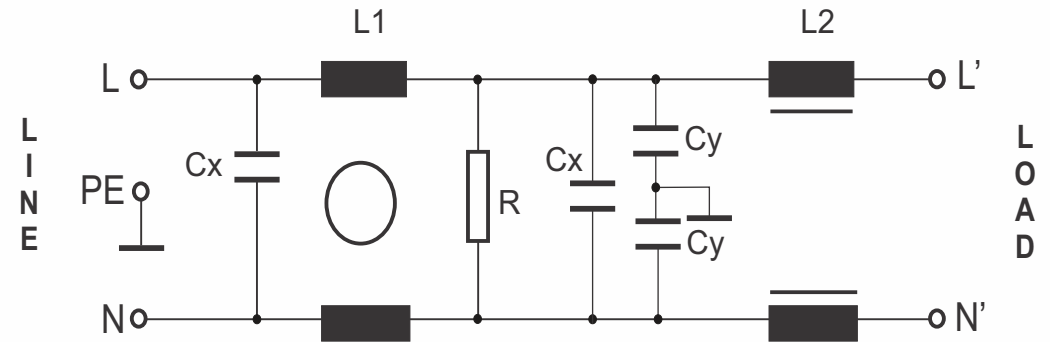
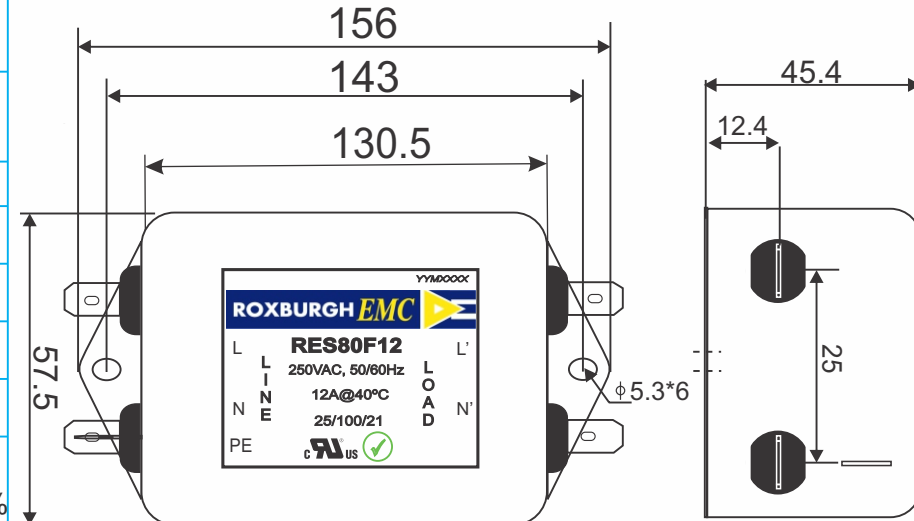
Tel: 44 (0) 1724 273200
Fax: 44 (0) 1724 280353
Email: sales@dem-uk.com
Web: www.dem-uk.com/roxburgh

RES80F12**Rev. 0****CIRCUIT DIAGRAM:**

Y-capacitors not included in -M versions designed for medical applications.

CHARACTERISTICS:

Rated Voltage:	250VAC max
Rated Current at Ambient:	12A @ 40°C
Operating Frequency:	DC-400HZ
Climatic Class (IEC60068-1):	25/100/21
Temperature Range:	-25°C to +100°C
Over load Current:	1.5 x Rated Ct. for 1 Min
Operational Leakage current : (at 230VAC/50Hz and Total C +/-20%)	0.002 mA max
Worst case Leakage current : (N interrupted and Total C +/-20%)	<1.101 mA max
DCR @ 25°C (+/-25%) :	60 mΩ
Test Voltage (100%) for 2 sec:-	
L-N:	1100VDC
L-GND:	3000VDC
Ingress Protection:	IP 20
Weight (Approximate):	650 gr
FILTER PARAMETERS:	
Total Inductance (L-L'+N-N') @10KHz:	3.30mH +50%,-30%
Total Capacitance (L-L/L-N) @1KHz:	2μF +/- 20%
Total Capacitance (L/N-PE) @1KHz:	9.4nF +/- 20%
Total Resistance (L-L/L-N):	0.22MΩ +/- 10%
Total Resistance (L/N-GND):	
APPROVALS:	
REACH	
RoHS	
UL	
	APPROVED BY AJAY
	Date: 10-04-2014

**MECHANICAL DIMENSION (mm):****Note:**




Housing matl. Fe with Ni Plated
Fast-On Terminal (6.3 x 0.8mm)
Connections

TOLERANCE: +/-1.0 mm



RES80-M Two-Stage High Performance Medical Applications

Options Available:

Part Number	Rated Current @40°C A	Leakage Current @ 230V/50Hz mA	Inductance ΣL mH	Capacitance ΣCx uF	Resistance ΣR K Ω	Connection Type		
								
RES80F01-M	1	0.002	22	0.33	1000	F	W	
RES80F03-M	3	0.002	9.8	0.47	470	F	W	
RES80F06-M	6	0.002	7.8	1	220	F	W	
RES80F10-M	10	0.002	4.5	1	220	F	W	
RES80F12-M	12	0.002	3.25	1	220	F	W	
RES80F16-M	16	0.002	2.8	1	220	F	W	S

Call us on:

Tel: +44 (0) 1724 273228

DEM Manufacturing
Deltron Emcon House
Hargreaves Way
Sawcliffe Industrial Park
Scunthorpe, North Lincolnshire.
DN15 8RF



Tel: 44 (0) 1724 273200

Fax: 44 (0) 1724 280353

Email: sales@dem-uk.com

Web: www.dem-uk.com/roxburgh